

VENDOME COPPER & BRASS WORKS

INCORPORATED

DISTILLERY EQUIPMENT • STAINLESS STEEL TANKS

BREWERY EQUIPMENT • PROCESS SYSTEMS

729 EAST FRANKLIN STREET

LOUISVILLE, KENTUCKY 40202

www.vendomecopper.com

502-587-1930
FAX 502-589-0639

Page 1 of 11

Customer: Tara Backes

Address: Keller Graduate School of Management

Email: tnbackes@me.com

Phone: 503-432-5864

Cell:

Fax:

Date Sent: 3/8/2012

Price Updated: 5/3/2011

Quoted By: Rob Sherman

Phone: 502-587-1930 x121

Email: Robs@vendomecopper.com

The systems listed on the following pages are designed for low to middle proof whiskey, rum, brandy, or single distillation of GNS, for gin and vodka. All of the systems are capable of producing 190 proof in multiple runs. A vodka column is highly recommended if vodka is the desired product and will be produced from raw materials. Any custom pot still systems that are not listed or continuous distillation systems please inquire and pricing will be provided once the design has been established.

All of the batch still systems are custom designed and fabricated upon order. All equipment is for heavy industrial use and is fabricated in Louisville, Kentucky, USA by fourth generation coppersmiths. Vendome can fabricate any size or shape to meet your needs including partial systems. Any other related stainless steel or copper equipment can also be supplied, such as, fermenters, cookers, whiskey tanks, bottling tanks, etc. Delivery is usually 10 to 14 weeks depending on work load and material availability at the time of the order. Shipping can be quoted once the design, delivery date, and destination are established.

Terms are 30% down, 60% prior to shipment, remainder net 30 with established credit. Prices do not include taxes, if any apply. After receipt of down payment, fabrication drawings will be supplied to the customer for approval prior to the start of fabrication. Pricing is subject to change once final design drawings are approved. Installation of systems by Vendome personnel is available with pricing provided upon request.

Vendome will supply serial numbers for all equipment prior to final shipping. It is the customer's responsibility to obtain all required permits and abide by all state and federal regulations.

Upon request, we can refer a consultant to help you with all of your startup and recipe development needs. We also can provide contacts if you require equipment leasing.

POT STILLS					
Item	Qty	Gallon Charge			
		125	250	500	750
Standard Copper Batch Still Steam Jacketed	1				
One (1) hand crafted ornate manway with sightport					
One (1) sightport for viewing pot contents					
One (1) 4" bottom outlet with valve					
Eight (8) couplings for heating, temperature, safety, spares					
All gauges and safety devices included					
Four (4) 4" cu pipe legs with adjustable feet, 6" painted steel on 500/750.					
All brass or stainless steel hardware					
One (1) copper lid with vapor outlet piping					
One (1) copper vertical condenser/product cooler with stainless steel hardware					
All piping for tray drains.					
17" dia pot mount copper column with four (4) bubble cap trays and four (4) easy open sightports					
Standard finish out side pot welds polished and acid washed satin finish					
CIP connections with sprayballs (1) pot and (1) column					
Option 1 - Simple Reflux (See page 10)		\$59,823	\$69,657	\$99,940	\$129,580
One dephlegmator with water line from condenser for tray reflux					
One (1) Spirit Cup					
Option 2 - Pumped Reflux (See page 11)		\$69,250	\$78,166	\$109,560	\$139,890
3-bay stainless reflux and receiving tank combo and CIP system					
no dephlegmator included.					
One (1) 304 ss and glass Hydrometer station					
One 9GPM explosion proof alcohol / reflux / CIP pump, variable speed.					
Option 3 - Pumped Reflux with Dephlegmator (See page 12)		\$75,860	\$84,758	\$117,394	\$148,438
3-bay stainless reflux and receiving tank combo and CIP system					
One dephlegmator with water line from condenser for tray reflux					
One (1) 304 ss and glass Hydrometer station					
One 9GPM explosion proof alcohol / reflux / CIP pump, variable speed.					
Option for internal coils instead of steam jacket.		CALL FOR PRICING			
Explosion Proof electrical agitator with mounting.		\$5,195	\$5,567	\$5,567	\$6,245
Single Phase, 230 volt, motor, gearbox, shaft, blade, mounting flange.					
Motor Starter not supplied					
Reflux Onion for Batch Still					
24" dia copper reflux onion with stainless flanges, gaskets, and bolting hardware, recommended for 125 and 250 gal - \$4,250.00					
30" dia copper reflux onion with stainless flanges, gaskets, and bolting hardware, recommended for 500 and 750 gal - \$4,800.00					
Mirror Finish		ADD 15% TO ANY OPTION ABOVE			
Standard system has outside welds polished only and an acid wash satin finish. Price is for polishing copper still, condenser and spirit safe.					
PAGE TOTAL:					

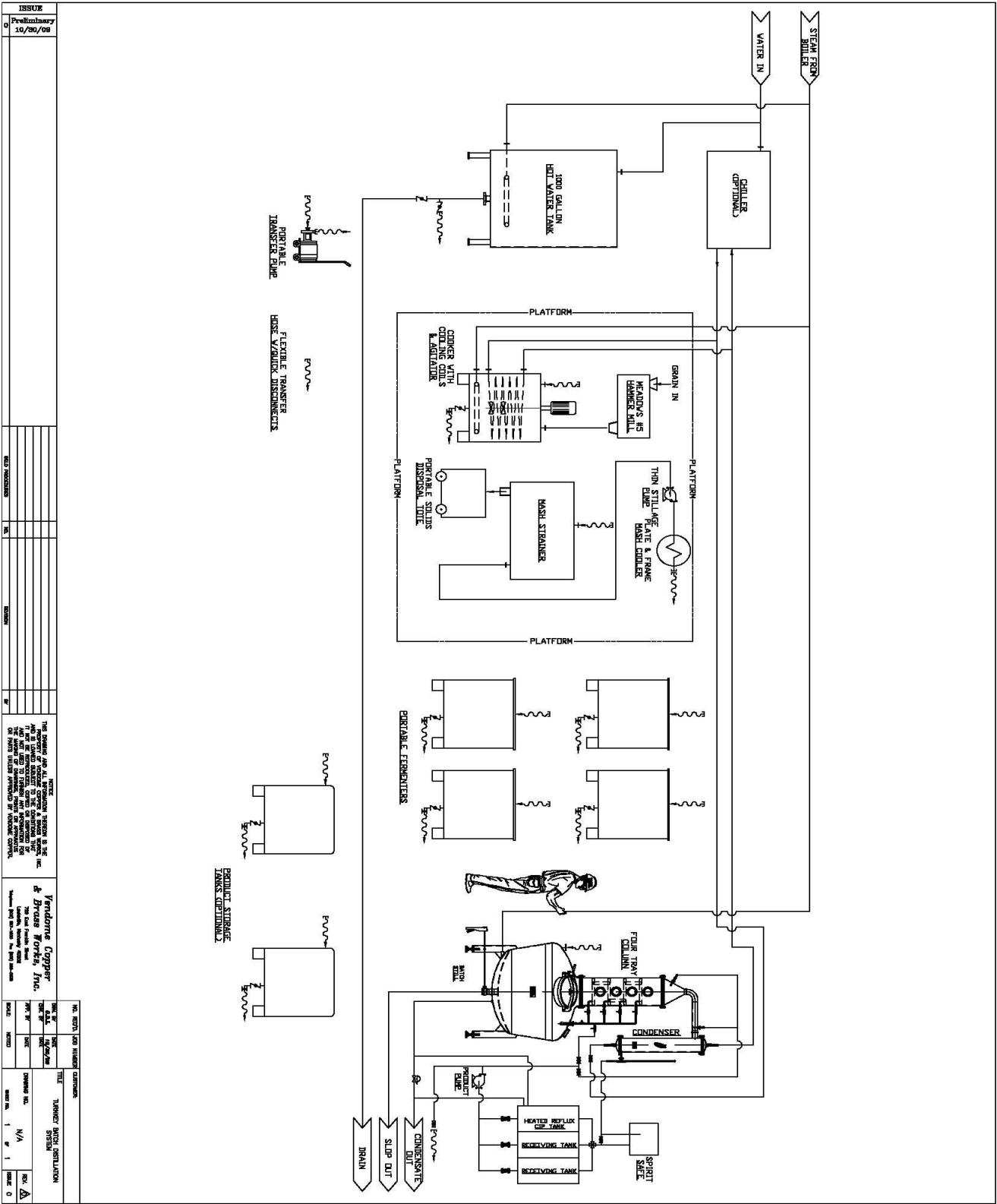
FERMENTERS						
Item		Qty	Gallon Charge			
			125	250	500	750
Square Tote Design Without Cooling						
304 ss, Square, open top, 1-1/2" or 2" NPT drain with valve						
335 gallon	\$2,969.00	4		\$11,876		
540 gallon	\$3,467.00	4			\$13,868	
Square Tote Design with Cooling Jacket						
304 ss, Square, open top, 1-1/2" or 2" NPT drain with valve						
335 gallon	\$3,768.00	4		\$15,072		
540 gallon	\$4,449.00	4			\$17,796	
RECEIVING TANKS						
Item		Qty	Gallon Charge			
			125	250	500	750
Stainless Receiving Tanks - Square Economy						
Square tote style. Industrial finish. Stackable and forktruck movable. Top manway. 1-1/2" or 2" NPT drain with valve.						
250 gallon	\$2,540.00	1	\$2,540			
350 gallon	\$2,780.00	1		\$2,780		
550 gallon	\$3,337.00	1			\$3,337	
Stainless Receiving Tanks - Round Polished						
Round, closed flat top, manway, 1-1/2" drain with valve and hose connect. Polished #4 finish						
125 gallon	\$4,750.00	1	\$4,750			
250 gallon	\$5,760.00	1		\$5,760		
500 gallon	\$6,950.00	1			\$6,950	
700 gallon	\$8,120.00	1				\$8,120
Stainless Receiving Tanks - Square - Cooling Jacket						
Square tote style. Industrial finish. Stackable and forktruck movable. Top manway. 1-1/2" or 2" drain with valve With ex cooling jacket			CALL FOR PRICING			
350 gallon						
550 gallon						
700 gallon						
Stainless Receiving Tanks - Round - Cooling Jacket						
Round, closed flat top, manway, 1-1/2" drain with valve and hose connect. Polished #4 finish, with external cooling jacket.			CALL FOR PRICING			
125 gallon						
250 gallon						
500 gallon						
700 gallon						
Note: Square Tanks will be priced at time of order. Prices subject to change. Any size available.						
					PAGE TOTAL:	

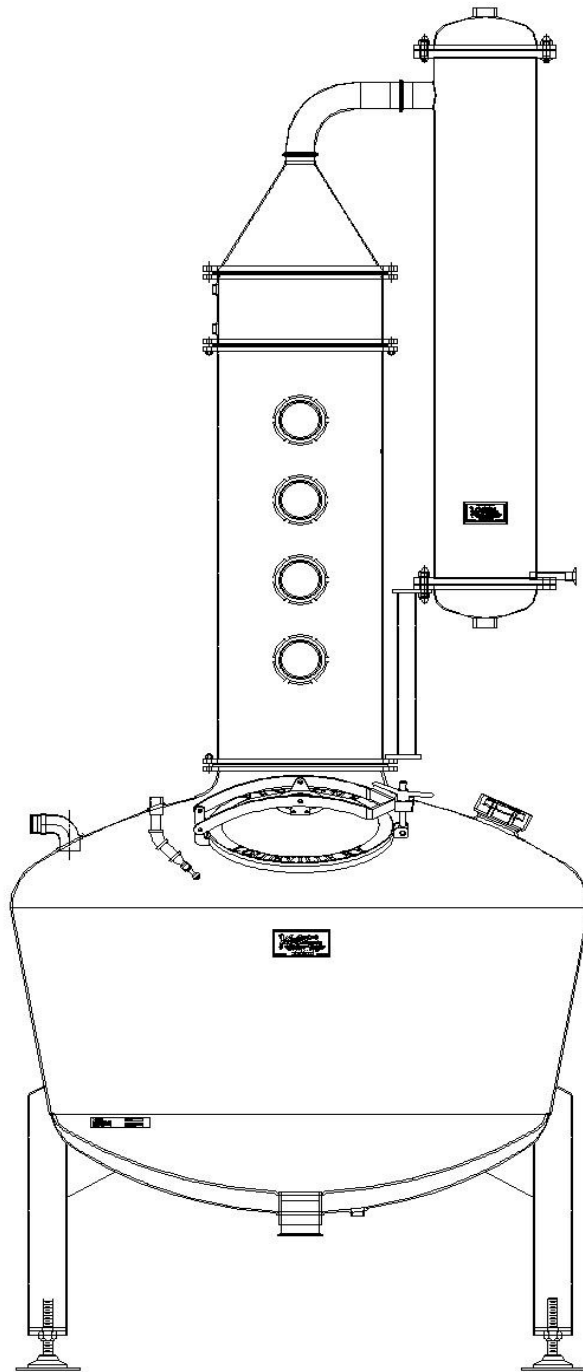
[illegible]

OPTIONS					
Item	Qty	Gallon Charge			
		125	250	500	750
Stainless Vodka Column with Structured Packing		\$41,648			
Requires Batch still sytem to operate					
One (1) 12-3/4" dia x 14' tall stand alone column w/Deplegmator					
Contains Sulzer ethanol structured and engineered packing					
Recommended for changing recipes and flow rates at higher proofs					
Alcohol Reflux pump and piping					
Column Mount Dephlegmator for reflux					
Stainless Vodka Column with Structured Packing		\$59,800			
Can operate as a stand alone unit					
Same item as above, but includes					
250 gallon steam jacketd 304 stainless pot					
Product cooler/ condenser and spirit cup					
Does not include alcohol pump (not required)					
Copper Vodka Column with 20 Plates		\$48,950			
Requires Batch still sytem to operate					
One (1) 11-1/2" dia x 16' tall stand alone column w/Deplegmator					
Contains 20 copper seive bubble plates					
Recommended for changing recipes and flow rates at higher proofs					
Alcohol Reflux pump and piping					
Column Mount Dephlegmator for reflux					
Copper Vodka Column with 20 Plates		\$66,325			
Can operate as a stand alone unit					
Same item as above, but includes					
250 gallon steam jacketd 304 stainless pot					
Product cooler/ condenser and spirit cup					
Does not include alcohol pump (not required)					
Vodka Column, Automated Water Control		CALL FOR PRICING			
Controls dephlegmator water temperature for more consistant product					
Hot Water Tank					
Insulated, square IBC tote design wit direct steam sprger					
Aids in speeding up the cooking process by heating and storing water					
drain, vent & temperture control valve					
250 gallon \$5,802.00	1	\$5,802			
350 gallon \$6,105.00	1		\$6,105		
550 gallon \$6,758.00	1			\$6,758	
Stand for Hot Water Tank		\$1,850			
Elevates Hot Water Tank for Gravity Feeding of Hot Water to Cooker					
Grain Mill - 5hp Hammer Mill \$3750.00	1	\$3,750			
Allows for fine grinding of corn and other grains					
Grain Mill -2HP Roller Mill \$3950.00	1	\$3,950			
12ft pencil auger elevator to move milled grain up and in		\$1,850			
50 Gallon Portable Open Top Tank w/Cooling Jacket	1	\$2,160			
100 Gallon Portable Open Top Tank w/Cooling Jacket	1	\$2,450			
PAGE TOTAL:					

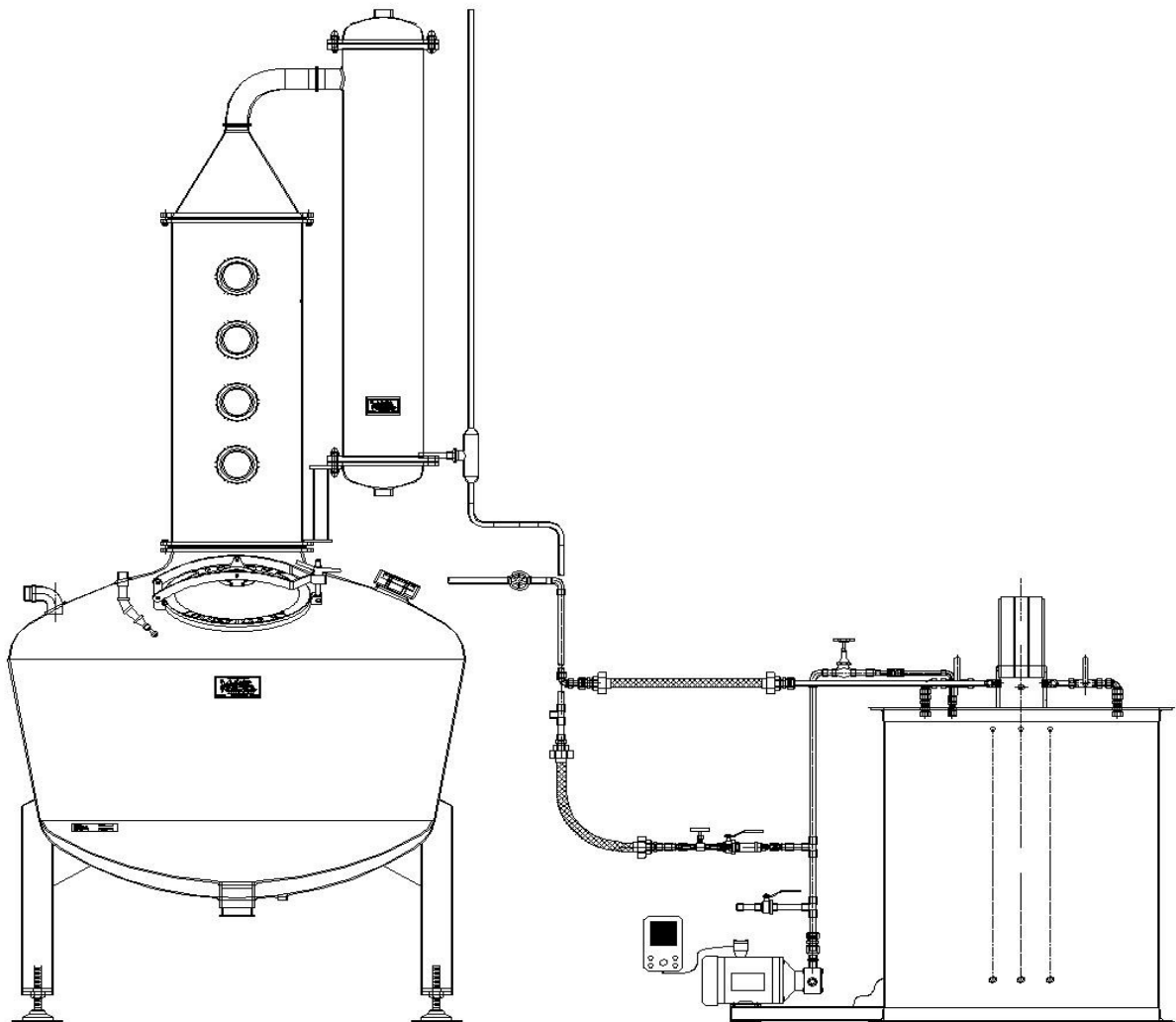
NOTES AND ADDITIONAL OPTIONS				
Anti Foam Plate	\$1,285			
Mounts below 17" dia column in the vapor outlet of the pot.				
Gin Basket	\$4,950			
8" dia 304 ss, quick opening lid, lift out basket, connecting piping with valves. Pipes off of side of column and bypasses 4 tray, using main condenser				
Field Installation				
This can be priced after plant design and layout have been established				
Touch Screen Automated System Control Unit				
This can be priced after plant design and layout have been established				
ROLL-A-ROUND MASH TRANSFER PUMPS				
<p>Moves raw materials between the cooker, fermenters, and batch still</p> <p>All pumps are supplied on a stainless steel roll-a-round cart and come with heavy duty EPDM chemical hoses</p> <p>Electric pumps come with 25' of cord. Plugs are supplied only if recepticle type is known.</p>				
1-1/2HP Electric Pump Single or Three Phase	\$3,200			
Stainless steel AMT Pump with TEFC motor				
10' intake and 20' delivery EPDM hoses with 1-1/2" camlocks couplings				
2HP Electric Pump Single or Three Phase	\$3,450			
Stainless steel AMT Pump with TEFC motor				
10' intake and 20' delivery EPDM hoses with 2" camlocks couplings				
1-1/2" Pnuematic Double Diaphragm FDA Pump	\$4,350			
All Stainless Steel wetted parts. Filter, Regulator & Lubricator included.				
10' intake and 20' delivery EPDM hose with 1-1/2" camlocks couplings				
Requires 70psi @ 20scfm for 20gpm.				
Air compressor & air hose not included				
2" Pnuematic Double Diaphragm FDA Pump	\$5,920			
All Stainless Steel wetted parts. Filter, Regulator & Lubricator included.				
10' intake and 20' delivery EPDM hose with 2" camlocks couplings				
Requires 70psi @ 20scfm for 20gpm.				
Air compressor & air hose not included				
PAGE TOTAL:				
GRAND TOTAL:				

SPECIFICATIONS				
Package Boiler - propane or natural gas driven	125	250	500	750
We recommend you purchase boiler and have installed locally	(BTU/hr)			
Minimum recommended boiler sizing for batch still only	250000	500000	1000000	1500000
Minimum recommended boiler sizing for batch still and mash cooker running simultaneously	400000	750000	1500000	2250000
Estimated Product Output in Liters(based on 8% ABV Charge with 5 hour run time)	Gallon Charge			
	125	250	500	750
80 Proof	75	150	300	450
100 Proof	60	120	240	360
120 Proof	50	100	200	300
140 Proof	43	86	172	258
<i>(*multiple runs)</i> 190 Proof	30	60	125	190
	<i>*production liters after heads and tails cuts</i>			



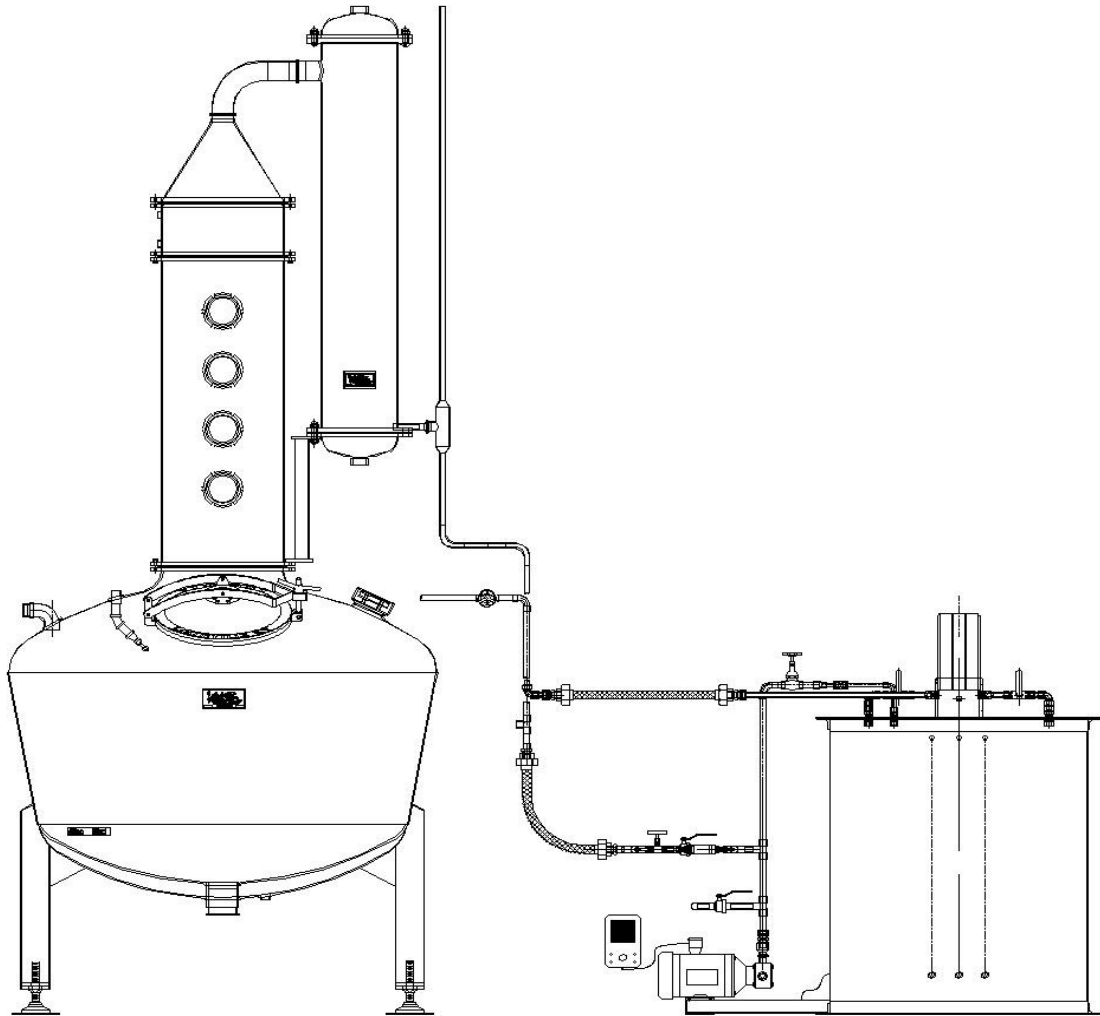


OPTION #1
FOOT PRINT: 7' x 7'
HEIGHT: 13'-6"



OPTION #2

FOOT PRINT: 7' x 15'-6"
HEIGHT: 12'-6"



OPTION #3

FOOT PRINT: 7' x 15'-6"

HEIGHT: 13'-6"